

## Product Testing

Advance sampling of the product by both adults and students suggested that the sherbet-like texture and flavor produced a product that could be served as a frozen dessert. Other studies showed that when the product was baked with brown sugar and butter its texture and flavor was much like a cooked peach. With this in mind, insert sheets were placed in each box suggesting that the product could be served either as a frozen dessert or as a cooked fruit.

Three school systems were chosen to participate in testing the product. They were: New York City, Tampa, Fla., and Ft. Lauderdale, Fla. These systems provided students with varying ethnic backgrounds. Both Tampa and New York City have large Latin enrollments. Ft. Lauderdale has a very limited Latin enrollment. The total number of servings shipped to the three school systems was approximately 620,000; enough for each student to have at least one serving.

The plantain product was served to students in Tampa during November, 1980, in Ft. Lauderdale during December and in New York City during the first week of January, 1981. In Tampa and New York City the product was served as a frozen dessert. However, the servings shipped to the Ft. Lauderdale schools has gone through a thaw and refreeze during transit and there was some

darkening of the product making it unacceptable for use as a frozen dessert. Most of the product was baked with brown sugar and butter, as suggested in the insert sheets. However, some managers used the product in baking plantains cakes and cookies.

The plantain product was introduced into the school systems without advance publicity except for 2 schools in Tampa and 1 in New York City. Overall, the student response was good with the acceptance rate ranging from 26% to 73%. According to the food service directors, the overall acceptance rate was higher than normal for a vegetable or fruit. All three school systems indicated that they would like to have the product again.

## Literature Cited

1. Joglar, J. A. 1980. Personal communication. Agricultural Development Administration. Puerto Rico Department of Agriculture.
2. Lutz, J. M. and R. E. Hardenburg. 1968. The commercial storage of fruits, vegetables, and florist and nursery stocks. U.S. Department of Agriculture Handbook No. 66. 94 p.
3. Seelig, R. A. 1969. Fruit and vegetables facts and pointers—bananas. United Fresh Fruit and Vegetable Association. 37 p.
4. Shepherd, K. 1970. A survey of major banana cultivars. Proc. Florida State Hort. Soc. 83:341-345.
5. United Fruit Sales Corporation. 1964. Banana ripening manual. United Fruit Sales Corp. 32 p.

*Proc. Fla. State Hort. Soc.* 94:311-317. 1981.

## HOSTS OF CEPHALEUROS, A PARASITIC ALGA IN FLORIDA<sup>1</sup>

R. B. MARLATT  
University of Florida, IFAS,  
Agricultural Research and Education Center,  
18905 S.W. 280 St.,  
Homestead, FL 33031

S. A. ALFIERI, JR.  
Division of Plant Industry,  
Florida Department of Agriculture and Consumer Services,  
Gainesville, FL 32602

*Additional index words.* plant disease, phytopathology.

**Abstract.** This extensive list of hosts of the pathogenic alga, *Cephaleuros* sp., in Florida combines a list recently published in the journal *Plant Disease* with hosts that are recorded in the 1975 Index of Plant Diseases in Florida. This latest list contains a total of 165 species and cultivars found in 53 plant families, including broadleaf plants, a grass, palms, cycads, and ferns. The alga was found on stems, leaves and fruits, and 34 hosts were obviously damaged by the alga.

*Cephaleuros* Kunze is the most damaging of several algae which live on or in vascular plants. Batista and Lima (1) listed 448 hosts of the alga in Pernambuco, Brazil. However, they did not describe any damage caused by the pathogen nor the host parts affected. *Cephaleuros* has been reported on hosts in Africa, Asia, and Australia (3). The alga occurs on cultivated and wild plants in neotropical

areas from North Carolina to Argentina (11), and ten of 145 hosts were reported for Louisiana (2).

*Cephaleuros* is one of the green algae; its vegetative stage is a circular, flat, green thallus. The alga usually occurs on a leaf's upper surface just beneath the cuticle. Microscopic examination reveals a thallus made of flat, short, closely crowded, branched filaments covering irregularly branched rhizoids. The alga is often mistakenly called "red rust" because erect, yellow to red filaments and fruiting bodies arise from the thallus surface. Infected branches bear the erect filaments, but thalli are usually not obvious. Some fruits have surface infections which may occur in shallow depressions, which are formed when infected areas of the fruit surface fail to grow as the fruit enlarges.

The following list of hosts includes the plant parts injured by the alga, when described by the observer, and distinguishes unaffected hosts from damaged ones. The general geographical distribution is indicated by the counties in which a host was found, and the number of times hosts were reported from a county (Fig. 1).

The majority of specimens bearing the alga were sent to the Florida Department of Agriculture and Consumer Services. The alga was identified by plant pathologists, and the hosts' latest nomenclature was provided by K. R. Langdon, Systematic Botanist and Carlos R. Artaud, Biologist, Division of Plant Industry. Their help is gratefully acknowledged. Other sources of information included bulletins, journals, and observations of the authors.

This extensive list of *Cephaleuros* hosts in Florida reveals the great diversity of 165 species and cultivars in 53 families including broadleaf plants, a grass, palms, cycads, and ferns. Algal thalli were found on fruits, stems, and leaves (Fig. 2-5). Very obvious injuries were exhibited on 34

<sup>1</sup>Florida Agricultural Experiment Stations Journal Series No. 3221. Contribution No. 511, Bureau of Plant Pathology, DPI.

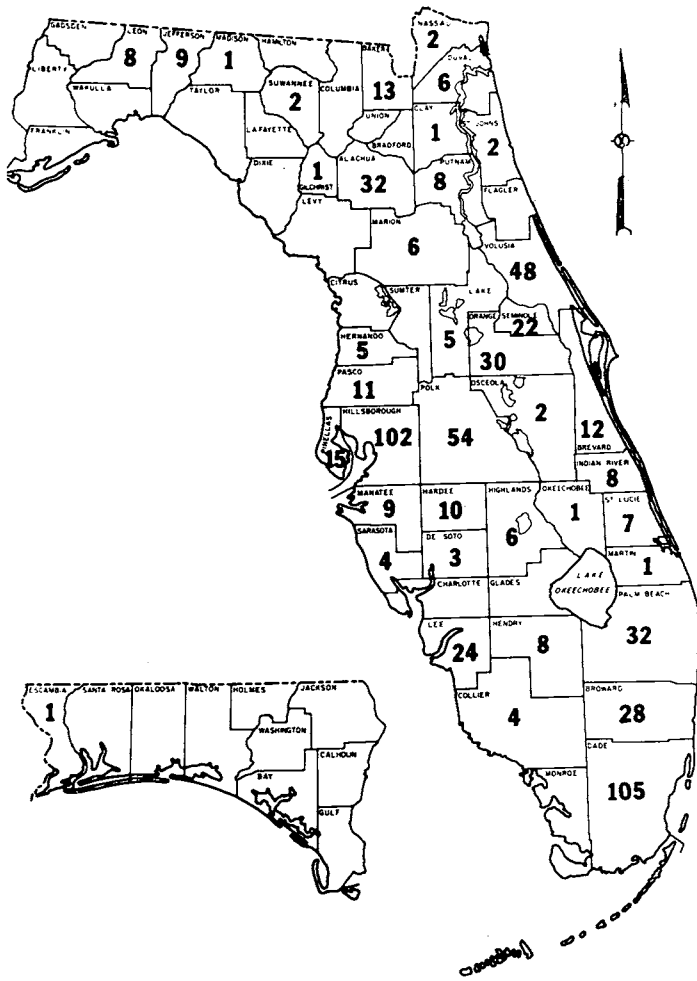


Fig. 1. Map of Florida showing numbers of *Cephaleuros* specimens received from 39 counties.

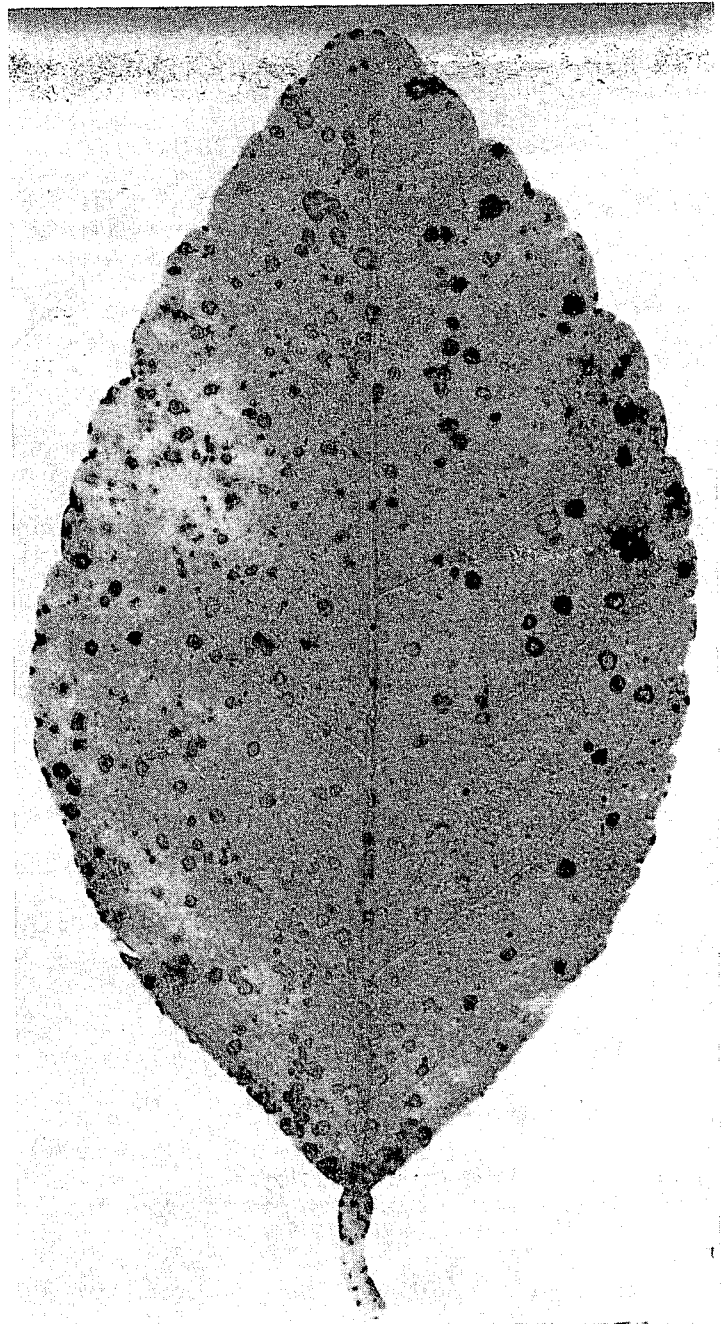


Fig. 2. Lime leaf with its nearly black, small alga spots, which are typical on this host.

hosts, including bark cracks, constriction or swelling of branches, and death of the entire leaf tissue under a thallus. Host injury was assumed to be due to the alga, but no pathogenicity tests were performed. Such tests must await the production of axenic cultures of Florida's *Cephaleuros* sp.

Although *Cephaleuros virescens* is the binomial commonly given for the alga in Florida, the taxonomy of the genus has not been studied here. Therefore, these Florida pathogens will be referred to as *Cephaleuros* sp. until their taxonomy is clarified.

In the following list, plant families and their genera are arranged alphabetically, followed by the host's common name and the plant part upon which the alga was found, if recorded. An asterisk after the plant part indicates obvious host injury. If the counties in which a host was found are known, they are listed last.

Less inclusive lists of hosts in Florida have been published (6, 10); the following list combines them and locates the number of *Cephaleuros* reports by county on a state map (Fig. 1).

### Discussion

Symptoms on guava leaves in Florida differ considerably in appearance and severity from symptoms on most other hosts (7, 8). Thalli on lime leaves are restricted in size and have a much more irregular surface than thalli on many hosts. It is possible that the occurrence of more than one *Cephaleuros* species in Florida accounts for these variations.

Since most of the specimens recorded were sent to a

laboratory by plant inspectors not engaged in a systematic collection of *Cephaleuros*, the number of specimens received from a county may reflect more than the alga's relative occurrence. It could also reflect inspection efficiency and interests of nurserymen and homeowners. *Cephaleuros* could be expected to occur throughout the range of a host in Florida, even though it was collected in only one county.

### CEPHALEUROS HOSTS IN FLORIDA

#### ACANTHACEAE

*Justicia ghiesbreghtiana* Lem.; jacobinia. Stem.

County: Hillsborough.

*Thunbergia grandiflora* (Roxb. ex Rottl.) Roxb.; clock-vine. Leaf.

County: Seminole.

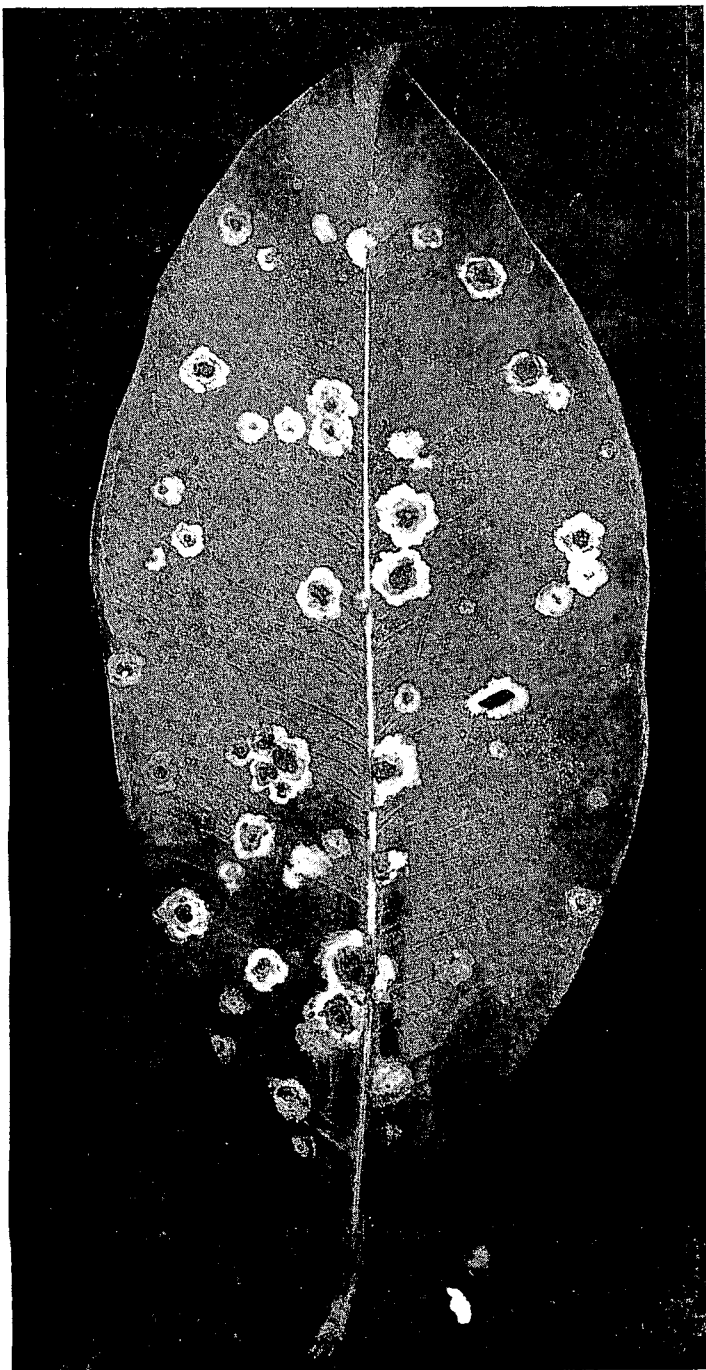


Fig. 3. Jambolan plum with large, light colored alga spots.

#### ACERACEAE

*Acer* sp.; maple. Stem.  
County: Hillsborough.

#### ANACARDIACEAE

*Anacardium occidentale* L.; cashew. Leaf.  
County: Broward.  
*Mangifera indica* L.; mango. Leaf.  
Counties: Broward, Dade, St. Lucie.  
*Metopium toxiferum* (L.) Krug & Urban; poisonwood. Leaf.  
County: Dade.

#### APOCYNACEAE

*Carissa carandas* L.; karanda. Leaf.  
*Proc. Fla. State Hort. Soc.* 94: 1981.

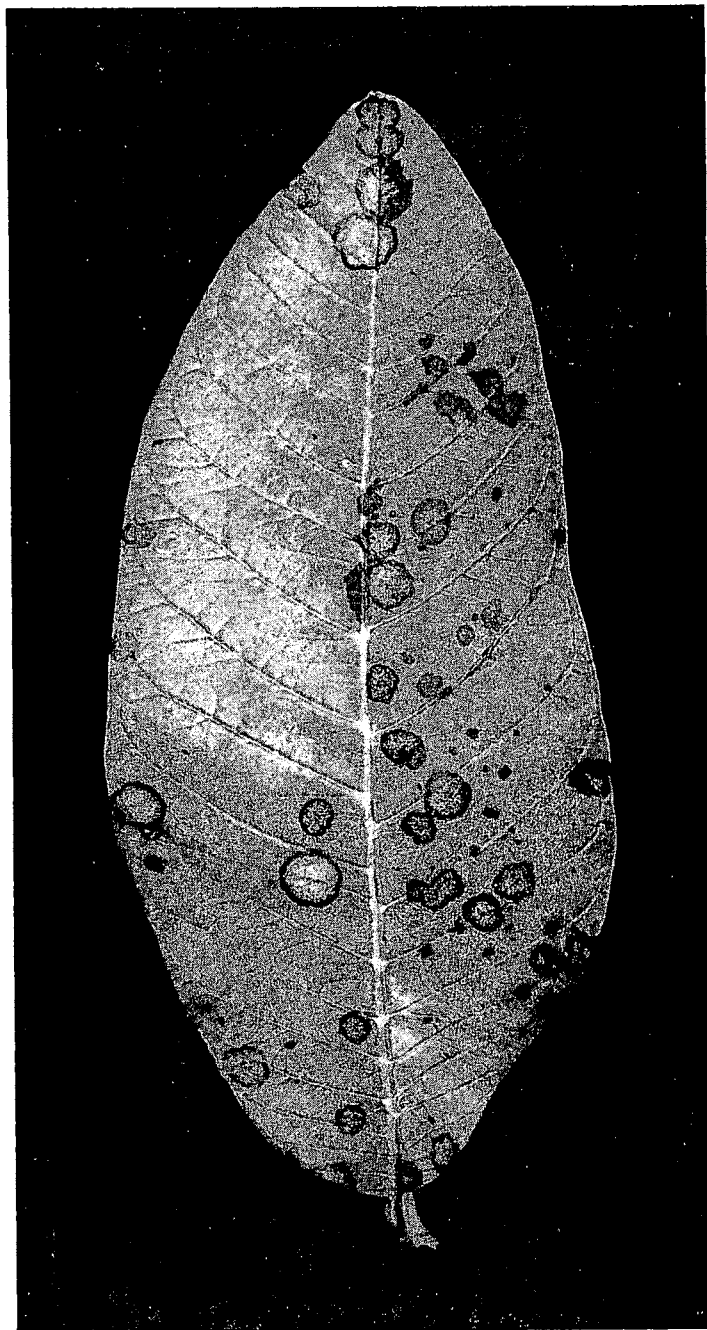


Fig. 4. Upper side of guava leaf has alga spots with no sign of the alga's thallus.

County: Dade.

*C. grandiflora* (E. H. Mey.) A. DC; Natal plum. Leaf.  
County: Lee.

*Nerium oleander* L.; oleander. Leaf.

Counties: Seminole, Volusia.

*Tabernaemontana divaricata* (L.) R. Br.; crape jasmine (12).  
*Trachelospermum jasminoides* (Lindl.) Lem.; confederate  
jasmine. Leaf.

Counties: Baker, Volusia.

#### AQUIFOLIACEAE

*Ilex cassine* L.; dahoon holly. Leaf\*.

Counties: Orange, Polk.

*I. cornuta* Lindl. & Paxt.; Chinese holly. Stem\*.

Counties: Alachua, Baker, Orange, Seminole.

*I. cornuta* Lindl. & Paxt. 'Burfordii'; Burford holly. Leaf\*,  
Stem\*.

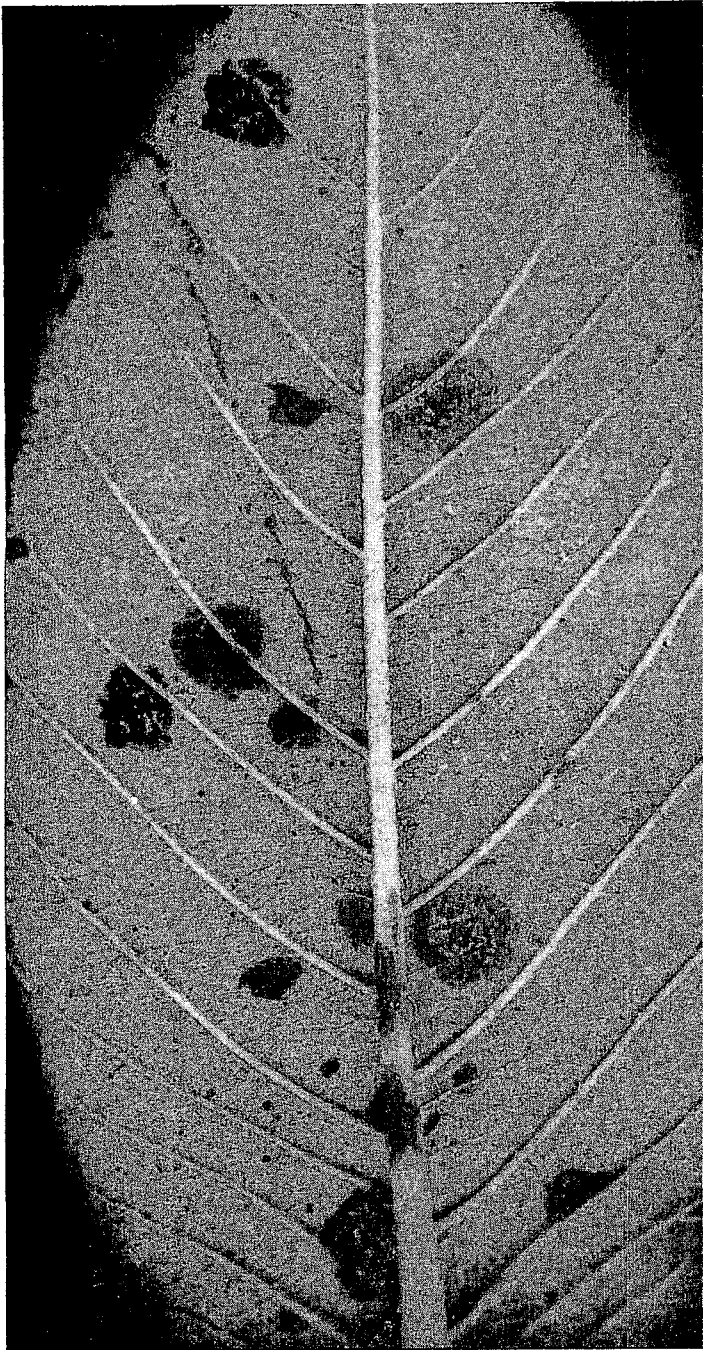


Fig. 5. Underside of guava leaf has alga spots that bear the alga's thallus and fruiting bodies.

- Counties: Hillsborough, Orange, Volusia.  
*I. crenata* Thunb.; Japanese holly. Leaf.  
 Counties: Baker, Polk.  
*I. opaca* Ait.; American holly. Leaf\*.  
 Counties: Alachua, Orange, Hillsborough.  
*I. rotunda* Thunb.; round holly, Kurogane holly. Leaf.  
 County: Seminole.  
*Ilex* sp.; Florida wild holly. Leaf, Stem\*.  
 Counties: Hillsborough, Orange, Polk.

#### ARACEAE

- Aglaonema* sp.; algaonema. Leaf.  
 Counties: Dade, Orange.  
*Anthurium andraeanum* Lind.; flamingo lily. Leaf.  
 County: Orange.  
*Monstera deliciosa* Liebm.; ceriman. Leaf.

- Counties: Dade, Palm Beach.  
*Philodendron radiatum* Schott; Dubia philodendron. Leaf.  
 County: Dade.  
*Spathiphyllum* sp.; spathe flower.  
 Counties: Broward, Dade.

#### ARALIACEAE

- Brassaia actinophylla* Endl.; schefflera. Leaf.  
 Counties: Brevard, Broward, Dade, Hillsborough,  
 Indian River, Orange, Palm Beach, Polk, St. Lucie,  
 Volusia.  
*Fatsyhedera lizei* (Cochet) Guillaum.; fatsyhedera. Leaf.  
 County: Seminole.  
*Hedera helix* L.; English ivy. Leaf.  
 County: Hillsborough.

#### BERBERIDACEAE

- Mahonia nervosa* (Pursh) Nutt.; Oregon grape. Leaf.  
 Counties: Hillsborough, Volusia.

#### BIGNONIACEAE

- Tabebuia pentaphylla* (L.) Hemsl.; trumpet tree. Leaf.  
 County: Dade.

#### BIXACEAE

- Bixa orellana* L.; annatto-tree. Stem\* (9).

#### BOMBACACEAE

- Pachira aquatica* Aubl.; Guiana chestnut.  
 County: Dade.

#### BORAGINACEAE

- Cordia obliqua* Willd.; cordia. Leaf.  
 County: Broward.

#### CAPRIFOLIACEAE

- Viburnum odoratissimum* Ker-Gawl.; sweet viburnum. Leaf.  
 Counties: Brevard, Hillsborough, Seminole.  
*V. suspensum* Lindl.; viburnum. Leaf.  
 Counties: Alachua, Hillsborough, Palm Beach, Volusia.  
*V. tinus* L.; laurustinus (12).  
*Viburnum* sp.; viburnum. Leaf.  
 Counties: Brevard, Volusia.

#### COMBRETACEAE

- Bucida buceras* L.; black olive. Leaf.  
 County: Palm Beach.

#### CORNACEAE

- Aucuba japonica* Thunb. 'Variegata'; gold-dust tree. Leaf.  
 Counties: Baker, Volusia.

#### CUPRESSACEAE

- Juniperus* sp.; juniper. Leaf.  
 County: Seminole.

#### CYCADACEAE

- Zamia furfuracea* L. f.; Jamaica sago-palm. Leaf.  
 Counties: Alachua, Dade.  
*Z. integrifolia* Ait.; coontie. Leaf.  
 County: Dade.

## EBENACEAE

*Diospyros kaki* L. f.; Japanese persimmon. Stem. (9).

## ERICACEAE

*Arbutus unedo* L.; strawberry tree. Leaf.

Counties: Duval, Hillsborough.

*Rhododendron indicum* (L.) Sweet; azalea. Leaf\*.

County: Polk.

*Rhododendron* sp.; azalea. Leaf\*, Stem\*.

Counties: Dade, Hillsborough, Manatee.

*Vaccinium ashei* Reade; rabbit-eye blueberry. Leaf, Stem\*.

County: Alachua.

## EUPHORBIACEAE

*Antidesma bunius* (L.) K. Spreng.; bignay, Chinese laurel. Leaf.

County: Palm Beach.

*Bischofia javanica* Blume; bishopwood tree. Leaf.

Counties: Broward, Dade, Lee, Palm Beach, Polk.

*Codiaeum variegatum* (L.) Blume var. *pictum* (Lodd.)

Mull. Arg.; croton. Leaf.

County: Collier.

## FAGACEAE

*Quercus glauca* Thunb.; ring-cupped oak. Leaf.

County: Hillsborough.

*Q. virginiana* Mill.; live oak. Leaf.

County: Seminole.

*Quercus* sp.; oak. Leaf.

County: Jefferson.

## FLACOURTIACEAE

*Flacourtia indica* (Burm. f.) Merr.; governor's plum. Leaf.

County: Dade.

## GRAMINEAE

*Bambusa* sp.; bamboo. Stem.

Counties: Dade, Monroe.

## JUGLANDACEAE

*Carya illinoensis* (Wang.) C. Koch; pecan. Stem. (9).

## LABIATAE

*Thymus* sp.; thyme. Leaf.

County: Dade.

## LAURACEAE

*Cinnamomum camphora* (L.) J. Presl; camphor tree. Leaf.

County: Orange.

*C. zeylanicum* Blume; cinnamon (12).

*Nectandra coriacea* (Sw.) Griseb.; lancewood. Leaf.

County: Dade.

*Persea americana* Mill.; avocado. Leaf.

Counties: Baker, Broward, Dade, Hendry, Hillsborough, Lake, Palm Beach, Polk, Volusia.

## LEGUMINOSAE

*Acacia auriculiformis* A. Cunn. ex Benth.; acacia. Stem\* (9).

*Albizia brownii* Walp.; albizzia. Stem (9).

*A. chinensis* (Osb.) Merr.; woman's tongue. Stem (9).

*Proc. Fla. State Hort. Soc.* 94: 1981.

*A. lebbeck* (L.) Benth.; lebbek. Stem (9).

*Calliandra* sp.; powderpuff. Leaf.

County: Dade.

*Pongamia pinnata* (L.) Pierre; pongam, karum tree.

Stem (9).

*Wisteria sinensis* (Sims) Sweet; Chinese wisteria. Stem.

County: Hillsborough.

## LILIACEAE

*Sansevieria zeylanica* (L.) Willd.; sansevieria. Leaf.

County: Orange.

## LYTHRACEAE

*Lagerstroemia indica*. 'Far East'; crape myrtle. Leaf.

County: Alachua.

## MAGNOLIACEAE

*Magnolia grandiflora* L.; magnolia. Leaf\*.

Counties: Alachua, Baker, Brevard, Broward, DeSoto,

Duval, Hernando, Hillsborough, Indian River, Lee,

Leon, Liberty, Manatee, Orange, Pasco, Pinellas, Polk,

Putnam, Sarasota, Seminole, Suwannee, Volusia.

*M. x soulangeana* Soul.-Bod.; Japanese magnolia, saucer magnolia. Leaf.

County: Volusia.

*M. virginiana* L.; Sweet bay.

County: Alachua, Polk.

*Michelia figo* (Lour.) K. Spreng.; banana shrub. Leaf\*.

County: Volusia.

## MALPIGHIACEAE

*Bunchosia lanceolata* Turcz.; bunchosia.

*Malpighia glabra* L.; Barbados cherry. Leaf.

County: Martin.

## MALVACEAE

*Hibiscus rosa-sinensis* L.; hibiscus. Leaf.

County: Hillsborough.

*H. tiliaceus* L.; mahoe. Leaf.

County: Dade.

## MORACEAE

*Ficus benghalensis* L.; banyan. Leaf.

County: Palm Beach.

*F. benjamina* L.; weeping fig. Leaf.

County: Palm Beach.

*F. elastica* Roxb. ex Hornem.; rubber plant. Leaf.

County: Brevard.

*F. elastica* Roxb. ex Hornem. 'Decora' rubber plant. Leaf.

Counties: Dade, Polk.

*F. pumila* L.; creeping fig. Leaf.

Counties: Orange, Palm Beach.

*F. retusa* L.; Chinese banyan, Indian laurel, Cuban laurel. Leaf.

Counties: Lee, Palm Beach.

*F. triangularis* Warb.; triangle fig. Leaf.

County: Alachua.

## MYRICACEAE

*Myrica cerifera* L.; wax myrtle. Stem.

County: Hillsborough.

*M. faya* Ait.; candleberry myrtle. Stem\* (9).

MYRSINACEAE

- Ardisia crenata* Sims; coral berry.  
*A. crispa* (Thunb.) A. DC.; ardisia (12).

MYRTACEAE

- Callistemon* sp.; bottlebrush. Leaf.  
 Counties: Broward, Dade.  
*Eugenia uniflora* L.; Surinam cherry. Leaf.  
 Counties: Palm Beach, Seminole.  
*Eugenia* sp.; Leaf.  
 Counties: Brevard, Hendry.  
*Feijoa sellowiana* O. Berg.; feijoa, pineapple guava. Leaf.  
 Counties: Alachua, Hillsborough, Jefferson, Orange.  
*Melaleuca quinquenervia* (Cav.) S. T. Blake; punk tree.  
 Leaf.  
 Counties: Baker, Broward, Hendry, Lee, Leon,  
 Okeechobee, Polk, St. Johns, Volusia.  
*Myrciaria cauliflora* (DC.) O. Berg.; jaboticaba. Leaf.  
 County: Polk.  
*Psidium cattleianum* Sabine; strawberry guava. Leaf.  
 County: Volusia.  
*P. guajava* L.; guava. Leaf\*, Fruit\*.  
 Counties: Dade, Indian River, Lee.  
*Rhodomyrtus tomentosa* (Ait.) Hassk.; downy myrtle. Leaf.  
 Counties: Collier, Orange.  
*Syzygium cumini* (L.) Skeels; Jambolan plum. Leaf\*.  
 Counties: Lee, Palm Beach.

NYCTAGINACEAE

- Bougainvillea glabra* Choisy; bougainvillea. Leaf.  
 County: Seminole.  
*Chionanthus virginicus* L.; fringe tree (12).  
*Jasminum grandiflorum* L.; Spanish jasmine (12).  
*Jasminum* sp.; jasmine. Leaf.  
 County: Dade.  
*Ligustrum japonicum* Thunb.; Japanese privet. Leaf.  
 Counties: Alachua, Polk.  
*L. lucidum* Ait.; Chinese privet (12).  
*Ligustrum* sp.; Leaf.  
 Counties: Baker, Hillsborough, Pinellas.  
*Osmanthus heterophyllus* (G. Don) P. S. Green; holly  
 osmanthus. Leaf.  
 Counties: Alachua, Hillsborough.

ORCHIDACEAE

- Cattleya* sp.; orchid. Leaf.  
 County: Palm Beach.

PALMAE

- Butia capitata* (Mart.) Becc.; pindo palm. Leaf.  
 County: Alachua.  
*Sabal palmetto* (Walt.) Lodd. ex Schult. & Schult. f.;  
 cabbage palm. Leaf.  
 County: Marion.

PIPERACEAE

- Peperomia obtusifolia* (L.) A. Dietr.; peperomia. Leaf.  
 County: Volusia.

PLATANACEAE

- Platanus occidentalis* L.; sycamore. Stem\*.  
 County: Hillsborough.

POLYGONACEAE

- Coccoloba diversifolia* Jacq.; pigeon-plum. Leaf\*.

- Counties: Dade, Indian River.  
*C. uvifera* (L.) L.; sea grape. Leaf\*.  
 Counties: Brevard, Dade.

POLYPODIACEAE

- Cyrtomium falcatum* (L.f.) K. Presl; holly-fern. Leaf.  
 County: Gilchrist.  
*Platynerium bifurcatum* (Cav.) C. Chr.; staghorn fern.  
 Leaf.  
 Counties: Dade, Lee.  
*P. hillii* T. Moore; elk's-horn fern. Leaf.  
 County: Dade.  
*P. vassei* Poiss.; staghorn fern. Leaf.  
 County: Dade.  
*P. veitchii* (Underw.) C. Chr.; staghorn fern. Leaf.  
 Counties: Dade, Lee.

PROTEACEAE

- Grevillea robusta* A. Cunn.; silk oak (9).  
*Macadamia integrifolia* Maid. & Betche; macadamia nut.  
 Leaf.  
 County: Lake.

RHAMNACEAE

- Hovenia dulcis* Thunb.; Japanese raisin tree (9).  
*Ziziphus mauritiana* Lam.; Indian jujube (9).

ROSACEAE

- Chrysobalanus icaco* L.; cocoplum, Leaf.  
 Counties: Broward, Dade.  
*Eriobotrya japonica* (Thunb.) Lindl.; loquat. Leaf.  
 County: Hillsborough.  
*Malus sylvestris* Mill.; apple. Stem.  
 County: Hillsborough.  
*Photinia* sp.; photinia. Leaf.  
 County: Volusia.  
*Pyracantha coccinea* M. J. Roem.; firethorn. Stem.  
 County: Hillsborough.  
*Raphiolepis indica* (L.) Lindl.; India-hawthorn. Leaf.  
 County: Baker.  
*Rubus* sp. 'Brazos'; Brazos blackberry. Stem.  
 County: St. Lucie.

RUBIACEAE

- Gardenia jasminoides* Ellis; gardenia. Leaf.  
 County: Palm Beach.  
*Genipa clusiifolia* (Jacq.) Griseb.; seven-year apple. Leaf.  
 County: Dade.  
*Ixora coccinea* L.; ixora. Leaf.  
 County: Dade.

RUTACEAE

- Citrus aurantifolia* (Christm.) Swingle 'Tahiti'; Persian  
 lime. Leaf\*, Stem\*.  
 Counties: Brevard, Broward, Collier, Dade, Hendry,  
 Highlands, Hillsborough, Indian River, Lee, Manatee,  
 Orange, Osceola, Palm Beach, Pasco, Seminole,  
 Volusia.  
*C. aurantifolia* (Christm.) Swingle; key lime. Leaf\*.  
 County: Dade.  
*C. limon* (L.) Burm. f.; lemon. Leaf\*.  
 Counties: Broward, Dade, Hendry, Highlands,  
 Hillsborough, Lee, Palm Beach, Pinellas, Polk.  
*C. limon* (L.) Burm. f. 'Meyer'; Meyer lemon. Stem\* (5).

- C. limon* (L.) Burm. f. 'Rough'; rough lemon. Stem\*.  
County: Dade.
- C. maxima* (Burm.) Merrill; pummelo (12).
- C. x nobilis* Lour. 'Temple'; temple orange. Stem\*.  
County: Polk.
- C. x paradisi* Macf.; grapefruit. Leaf\*, Stem\*.  
Counties: Dade, Hardee, Highlands, Indian River, Lee, Polk, St. Lucie.
- C. reticulata* Blanco; tangerine.  
County: Manatee.
- C. reticulata* Blanco 'Lee'; tangerine. Stem\* (4).
- C. reticulata* Blanco 'Osceola'; tangerine. Stem\* (4).
- C. reticulata* Blanco 'Robinson'; tangerine. Stem\* (4).
- C. sinensis* (L.) Osbeck 'Hamlin'; sweet orange. Leaf.  
County: Hillsborough.
- C. sinensis* (L.) Osbeck 'Page'; sweet orange. Stem\*.  
County: Hillsborough.
- C. sinensis* (L.) Osbeck 'Parson Brown'; sweet orange.  
County: Hillsborough.
- C. sinensis* (L.) Osbeck 'Queen Pineapple'; sweet orange. Stem\*.  
County: Dade.
- C. sinensis* (L.) Osbeck 'Valencia'; sweet orange. Leaf\*, Stem\*.  
Counties: Broward, Dade, Hardee, Highlands, Hillsborough, Lee, Manatee, Orange, Pinellas, Polk, Sarasota.
- Citrus* sp. Leaf\*, Stem\*.  
Counties: Collier, Dade, DeSoto, Hardee, Hendry, Highlands, Hillsborough, Madison, Polk, St. Lucie, Seminole.
- Fortunella margarita* (Lour.) Swingle, oval kumquat, Nagami kumquat (9).
- Zanthoxylum fagara* (L.) Sarg.; wild lime. Leaf.  
County: Indian River.

#### SAPINDACEAE

- Euphoria longan* (Lour.) Steud.; longan. Leaf\*.  
Counties: Dade, Palm Beach.
- Litchi chinensis* Sonn.; litchi, leechee, Leaf.  
Counties: Dade, Polk, Sarasota.
- Melicoccus bijugatus* Jacq.; Spanish lime. Leaf.  
County: Dade.

#### SAPOTACEAE

- Chrysophyllum cainito* L.; star-apple. Leaf.  
Counties: Dade, Lee.
- C. oliviforme* L.; satinleaf. Leaf.  
Counties: Dade, Lee.
- Mimusops elengi* L.; Spanish cherry. Leaf.  
County: Broward.
- Brunfelsia americana* L.; lady-of-the-night. Leaf.  
County: Dade.

#### THEACEAE

- Camellia japonica* L.; camellia. Leaf\*.  
Counties: Alachua, Baker, Bradford, Brevard, Clay, DeSoto, Duval, Escambia, Hardee, Hernando, Hillsborough, Jefferson, Lake, Leon, Manatee, Marion, Nassau, Okaloosa, Orange, Pasco, Pinellas, Polk, Putnam, Seminole, Suwannee, Union, Volusia.
- C. sasanqua* Thunb.; sasanqua camellia. Leaf.  
Counties: Alachua, Baker, Dade, Hillsborough, Jefferson, Leon, Orange, Pasco, Pinellas, Polk, Volusia.
- Camellia* sp. Leaf.  
County: St. Johns.
- Cleyera japonica* Thunb.; sakaki Leaf.  
County: Baker.
- Gordonia lasianthus* (L.) Ellis: loblolly bay. Leaf.  
Counties: Hillsborough, Volusia.

#### VERBENACEAE

- Avicennia germinans* (L.); black mangrove. Leaf.  
County: Lee.

#### ZINGIBERACEAE

- Alpinia zerumbet* (Pers.) B. L. Burt & R. M. Sm.; shell ginger. Leaf.  
County: Dade.

#### Literature Cited

- Batista, A. C., and D. A. Lima. 1949. Lista de suscetiveis de alga *Cephaleuros mycoidea* Karst. em Pernambuco. (Host list of the alga, *Cephaleuros mycoidea* Karst., in Pernambuco.). *Indus. e Com. B.* 16:32-46.
- Holcomb, G. E. 1976. Economically important hosts susceptible to stem infections by the alga *Cephaleuros virescens*. (Abstr.) *Proc. Amer. Phytopathol. Soc.* 3:337.
- Joubert, J. J., and F. H. J. Rijkenberg. 1971. Parasitic green algae. *Annu. Rev. Phytopathol.* 9:45-64.
- Knorr, L. C. 1964. A suggestion that the Lee tangerine may be hypersensitive to *Cephaleuros virescens*. *Plant Dis. Repr.* 48:478-479.
- , R. F. Suit, and E. P. Ducharme. 1957. Handbook of citrus diseases of Florida. *Fla. Agr. Exp. Sta. Bul.* 587, Univ. of Fla., Gainesville, 157 p.
- Marlatt, R. B., and S. A. Alfieri, Jr. 1981. Hosts of a parasitic alga, *Cephaleuros* Kunze, in Florida. *Plant Disease* 65:520-522.
- , and C. W. Campbell. 1980. Susceptibility of *Psidium guajava* selections to injury by *Cephaleuros* sp. *Plant Disease* 64:1010-1011.
- , and ———. 1980. Incidence of algal disease (*Cephaleuros* sp.) in selections of guava (*Psidium guajava*). *Proc. Fla. State Hort. Soc.* 93:109-110.
- Ruehle, G. D. 1936. An epiphytotic of algal spot in South Florida. *Plant Dis. Repr.* 20:221-222.
- Wehlburg, C., S. A. Alfieri, Jr., K. R. Langdon, and J. W. Kimbrough. 1975. *Index of plant diseases in Florida.* *Fla. Dept. Agr. & Consumer Services. Div. Plant Ind. Bul.* 11, 285 p.
- Wellman, F. L. 1972. Tropical American plant disease. The Scarecrow Press, Inc., Metuchen, N. J., 989 p.
- Wolf, F. A. 1930. A parasitic alga, *Cephaleuros virescens* Vimaze, on citrus and certain other plants. *Elisa Mitchell Sci. Soc. J.* 45:187-205.